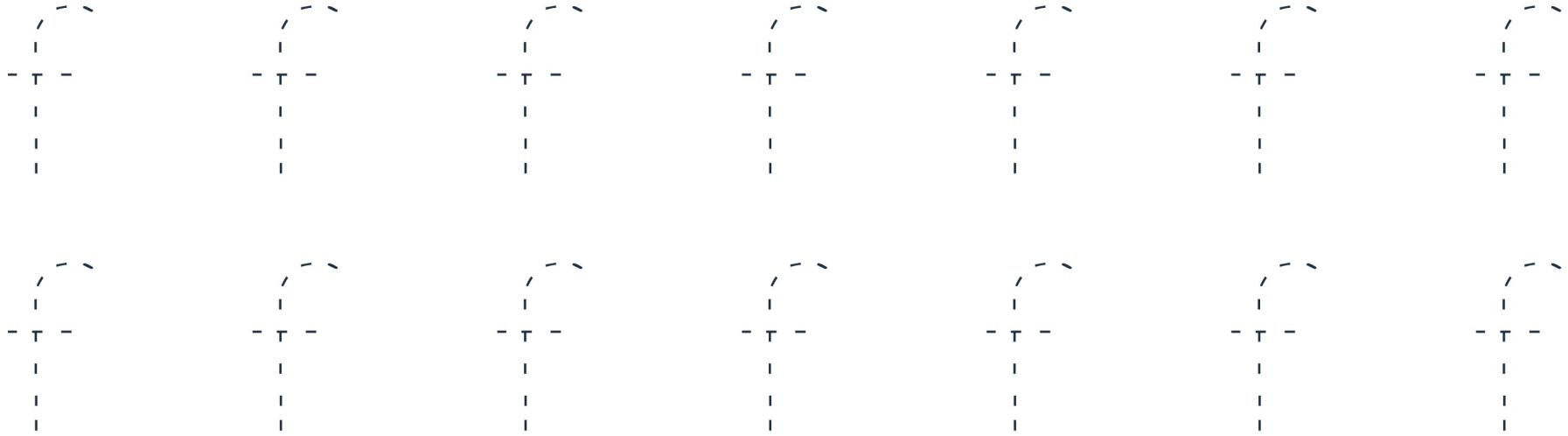


Ff



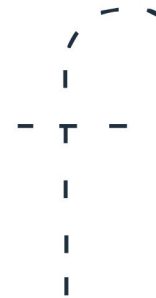
father



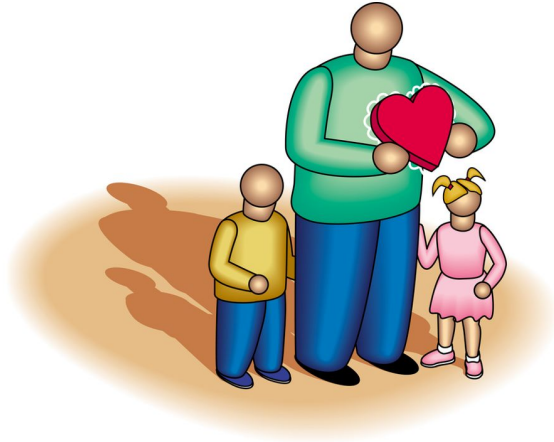
Ff



father



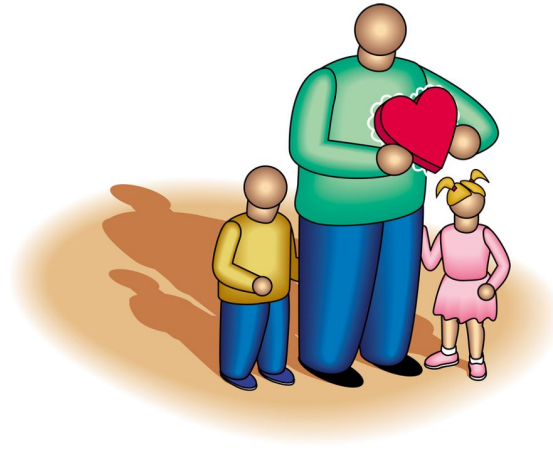
L I



love

A series of vertical dashed lines for handwriting practice, organized into three columns corresponding to the letters 'L', 'I', and 'love'.

LI



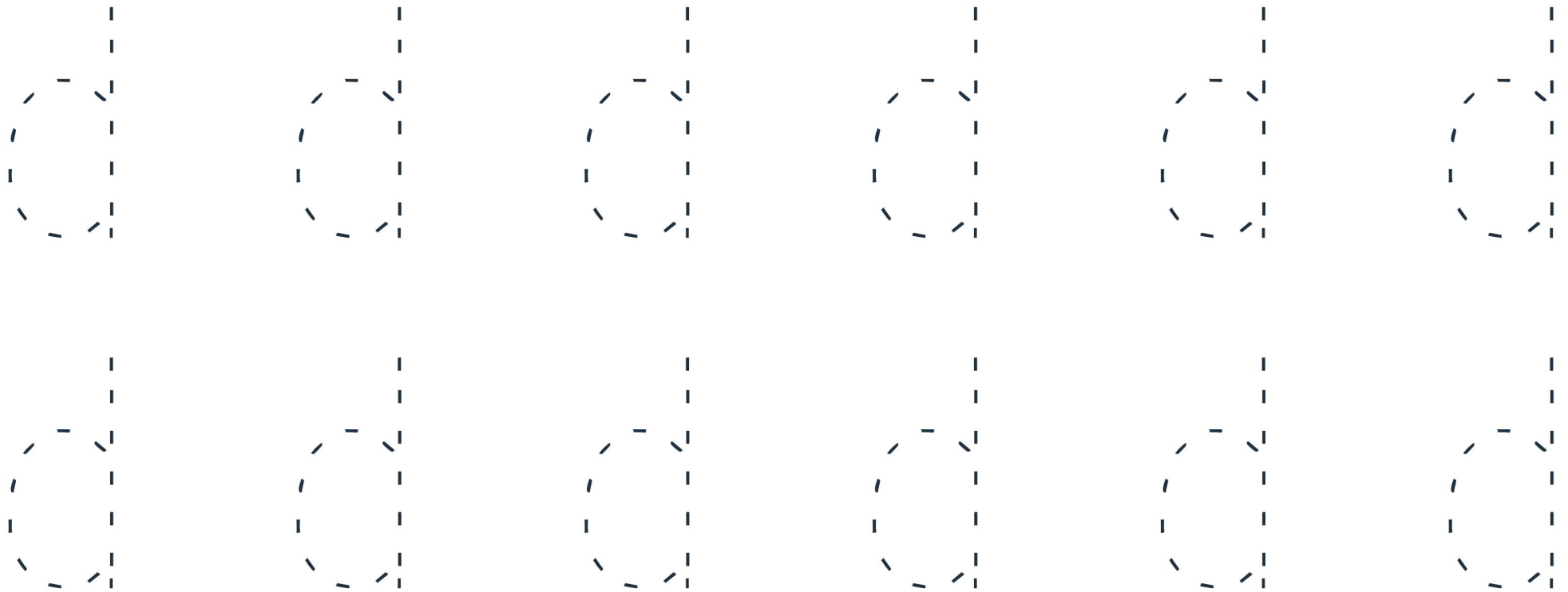
love

Tracing practice area consisting of two rows of vertical dashed lines. Each row contains nine vertical dashed lines, providing a guide for writing practice.

Dd



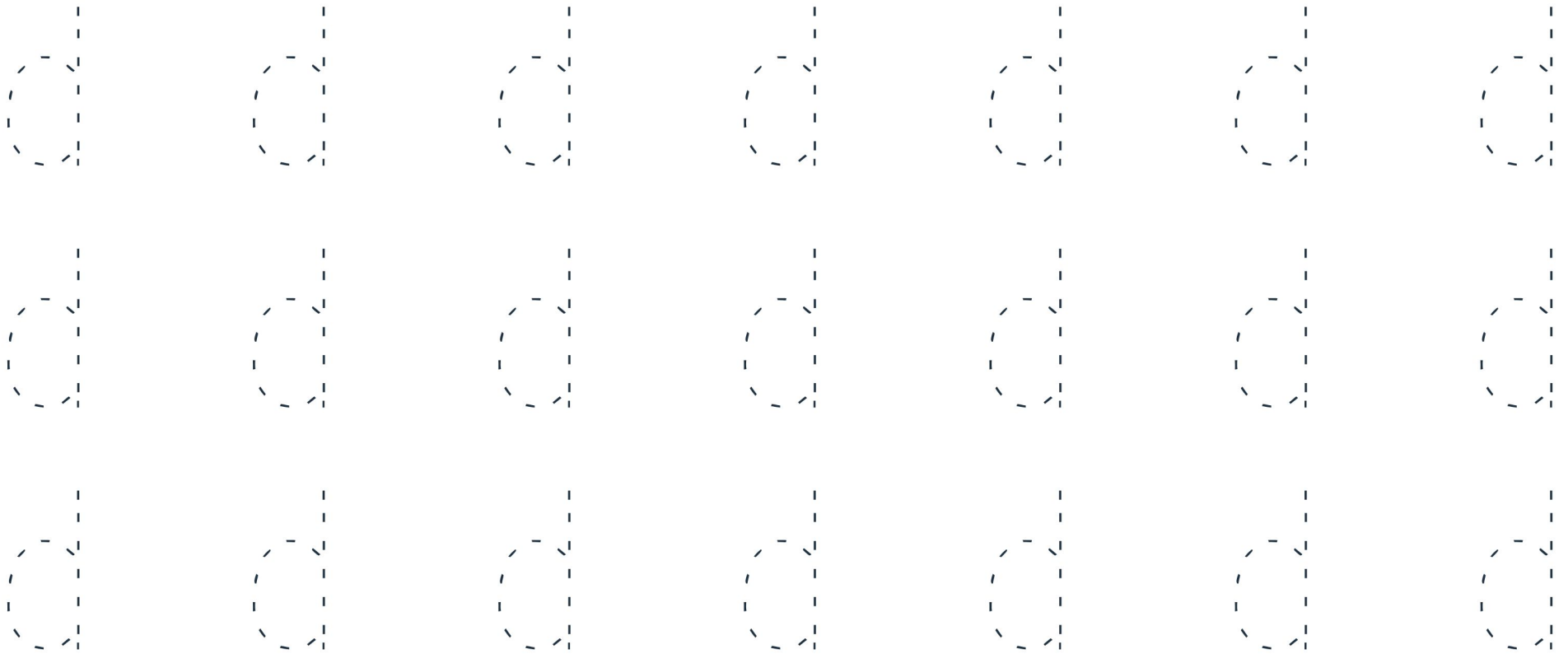
daughter



Dd



daughter



Ss



son



Ss



son

S

S

S

S

S

S

S

S

S

S

S

S

S

S

S

S

S

S

S

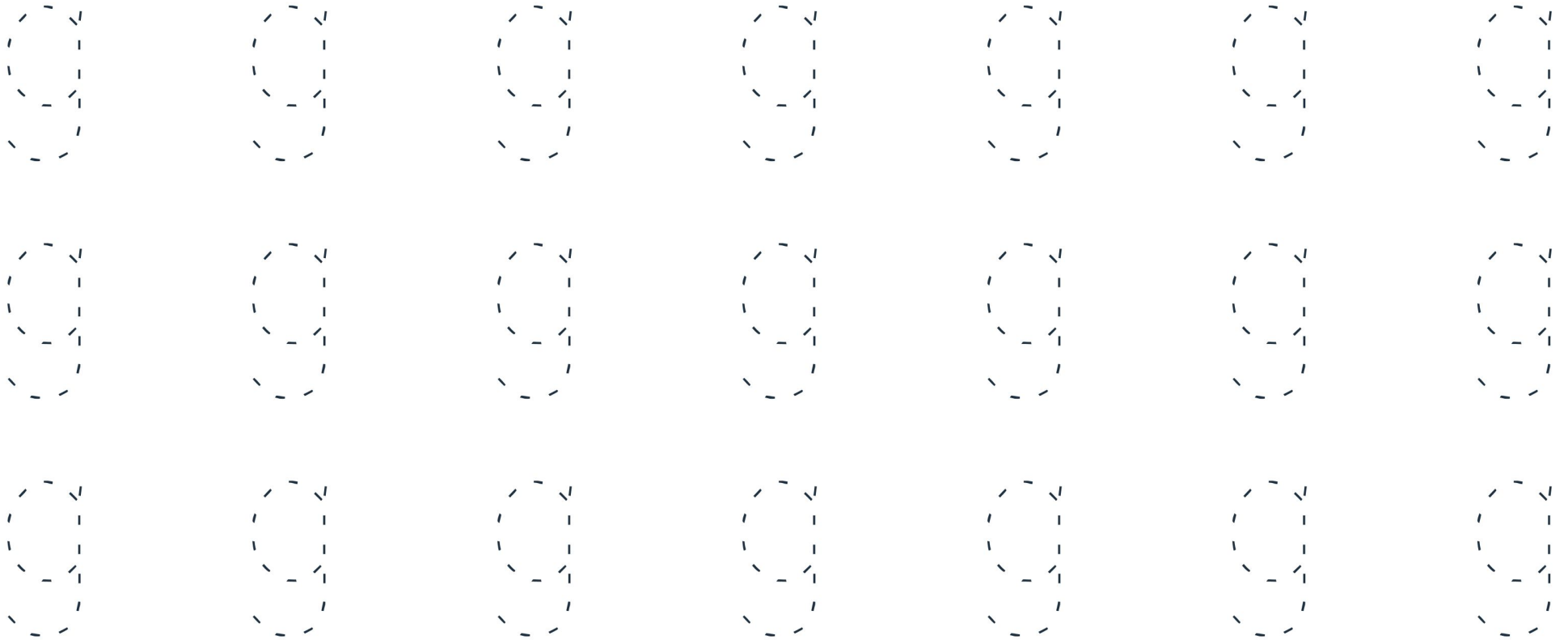
S

S

Gg



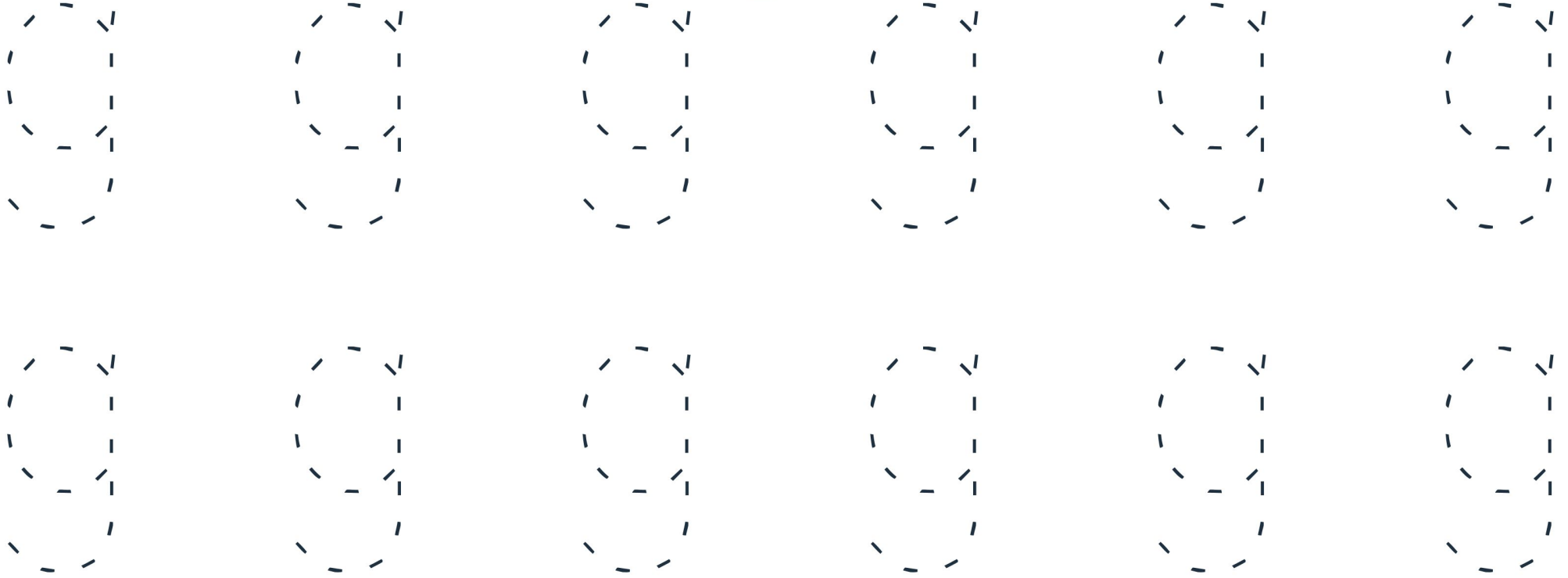
granddad



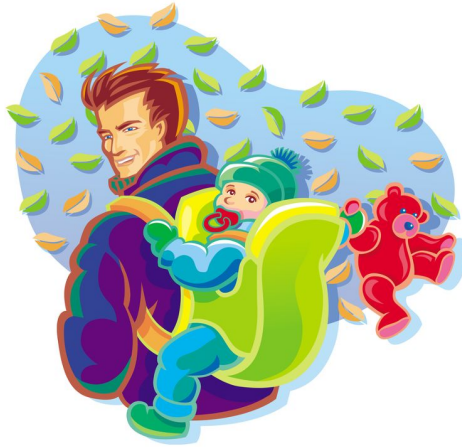
Gg



granddad



Dd



dad

d d d

d d d

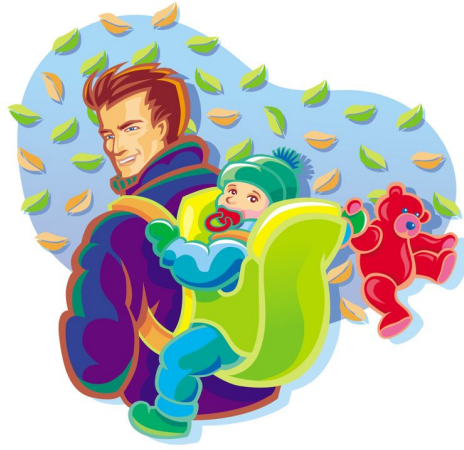
d d d

d d d

d d d

d d d

Dd



dad

dad dad dad dad

dad dad dad dad

dad dad dad dad

1

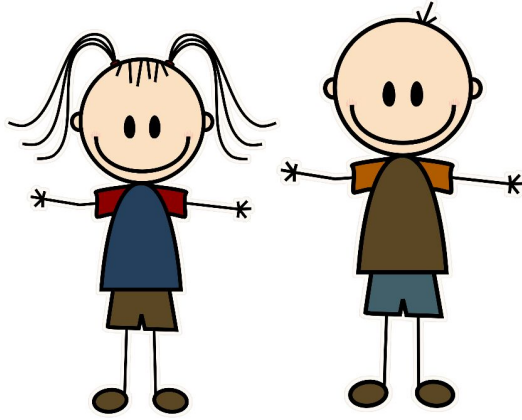


1 1 1 1 1 1 1 1

1 1 1 1 1 1 1 1

1 1 1 1 1 1 1 1

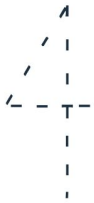
2



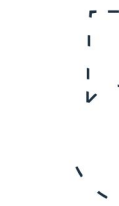
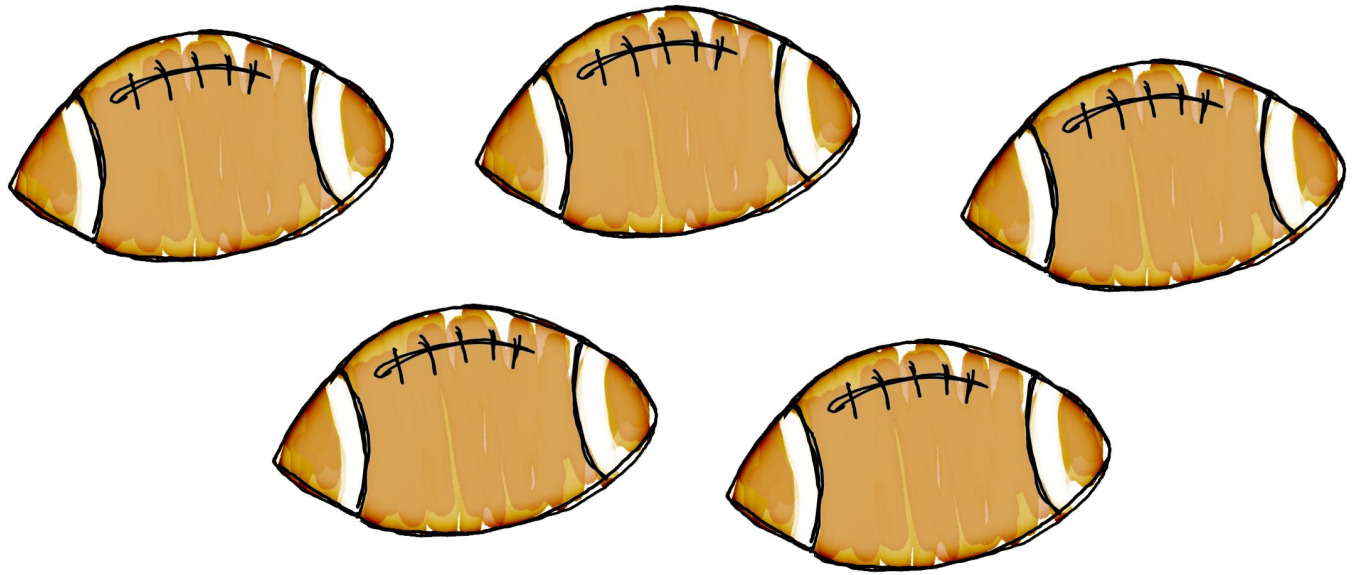
3



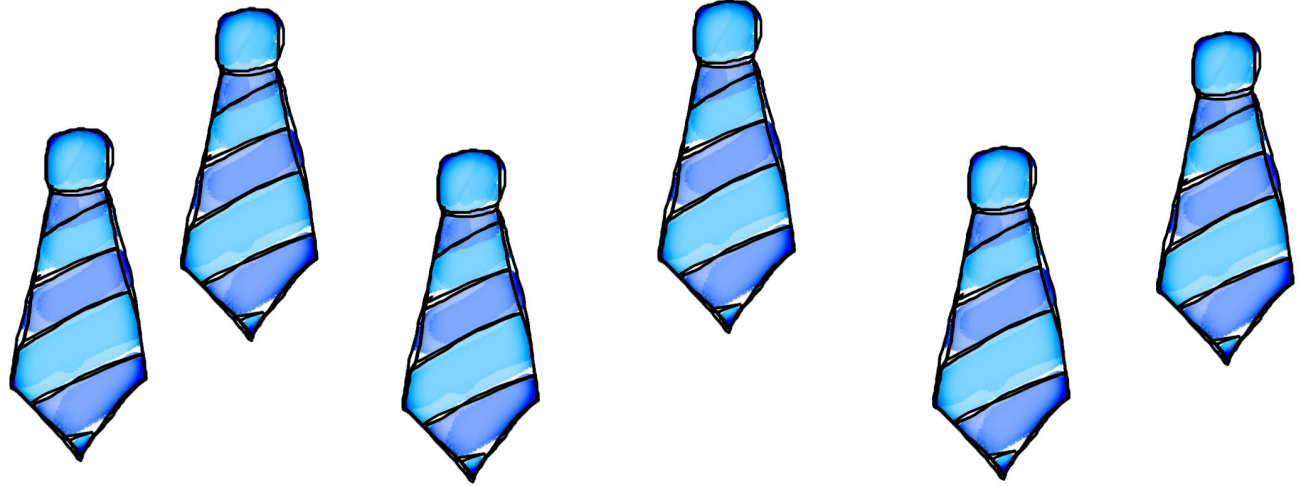
4



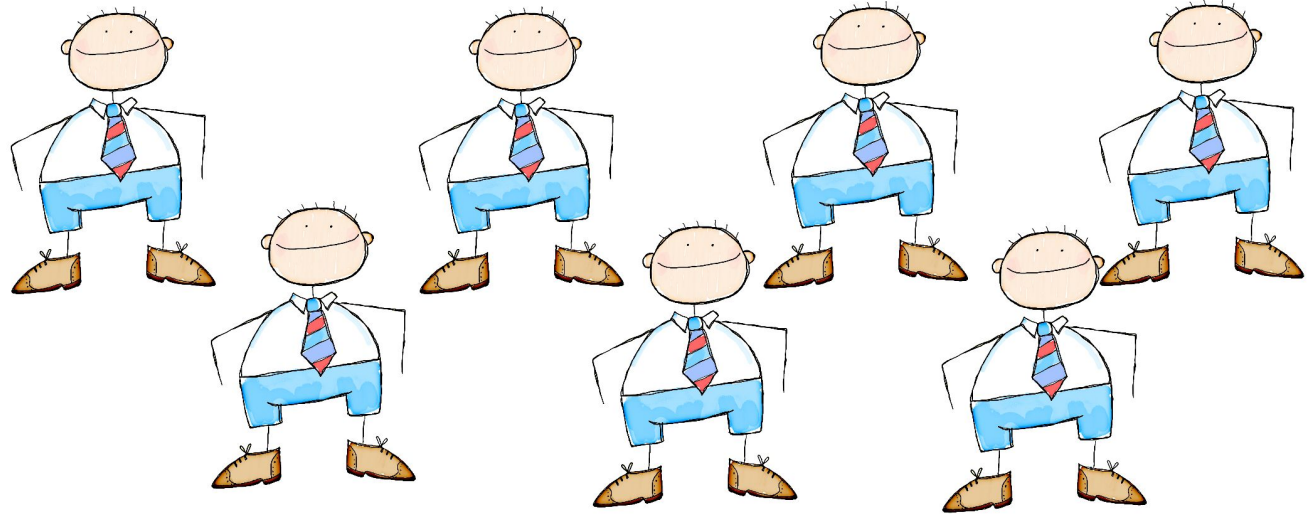
5



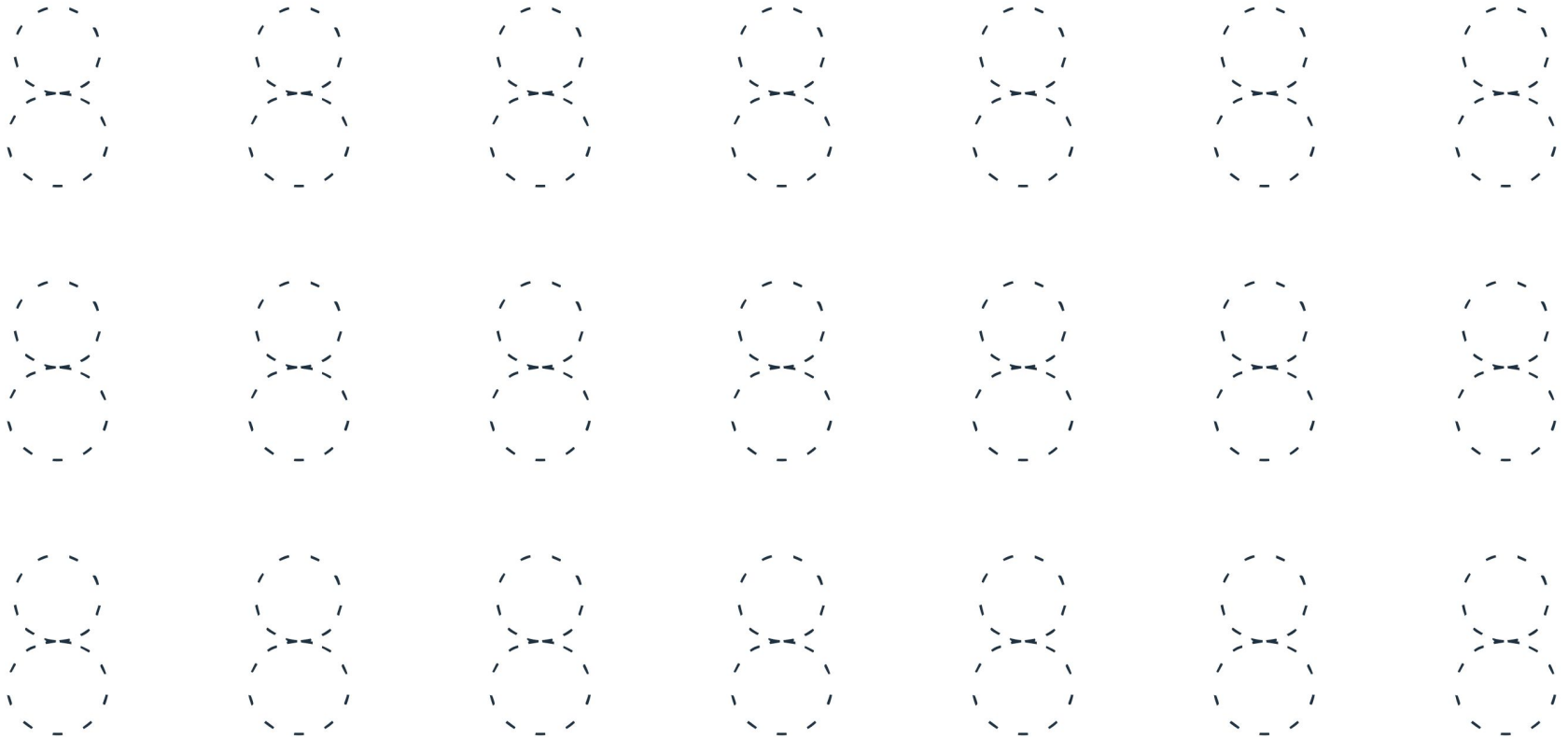
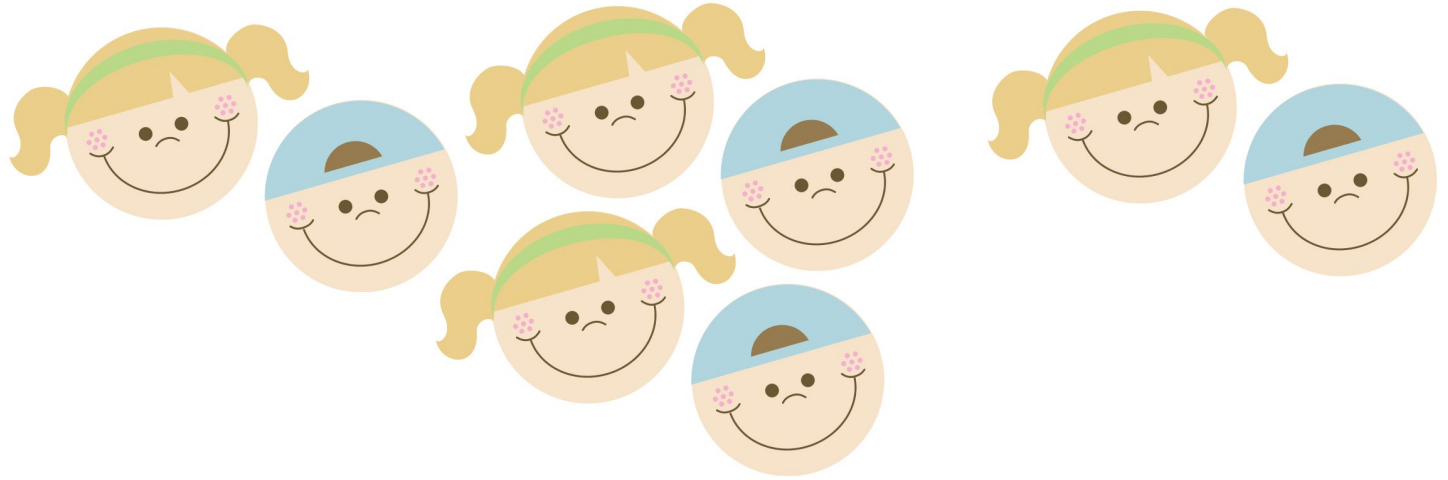
6



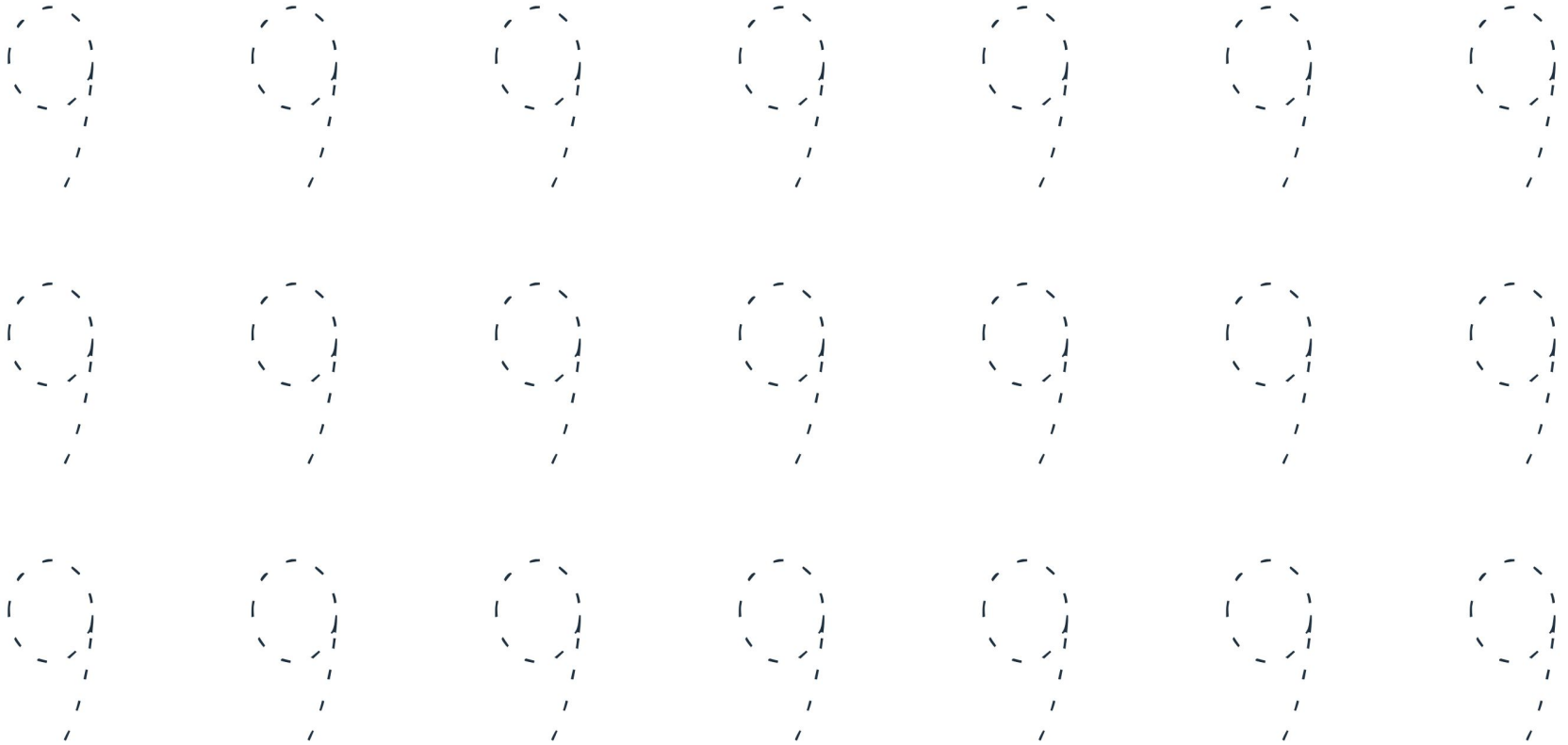
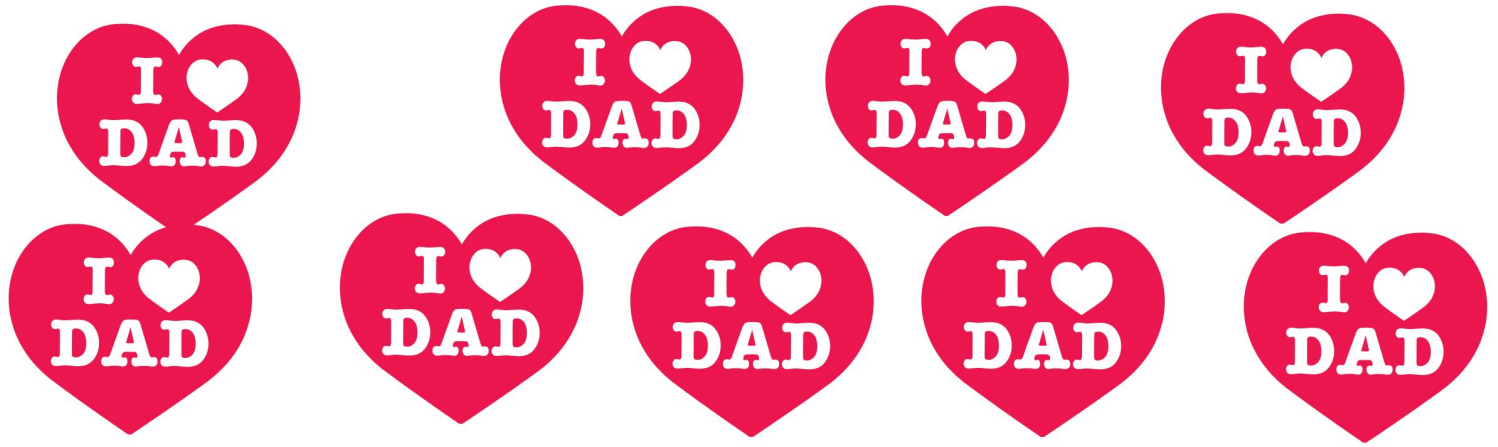
7



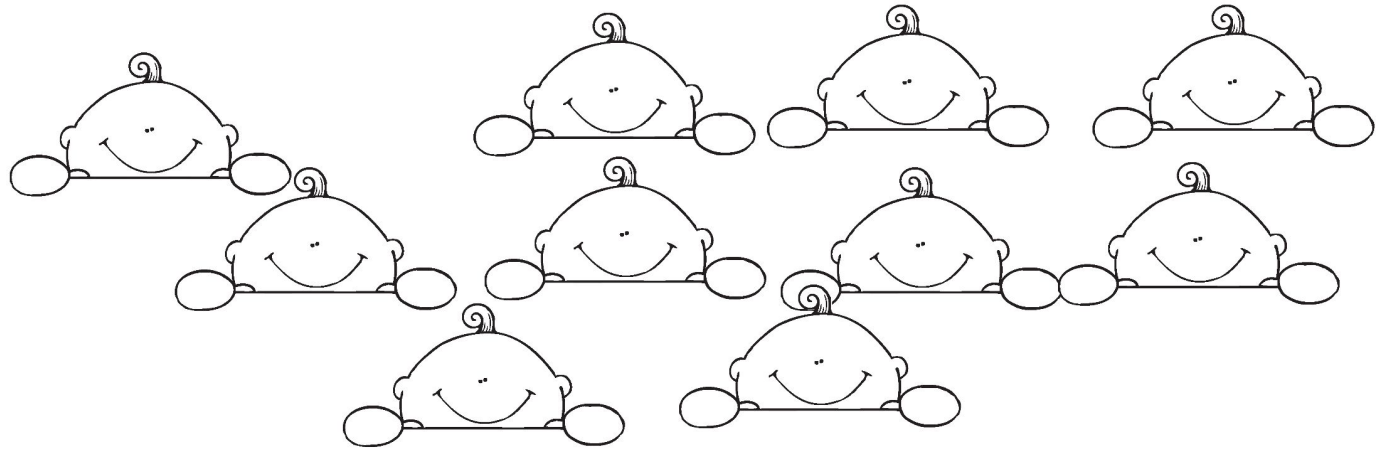
8



9



10



1 0

1 0

1 0

1 0

1 0

1 0

1 0

1 0

1 0

1 0

1 0

1 0